

Normal Force

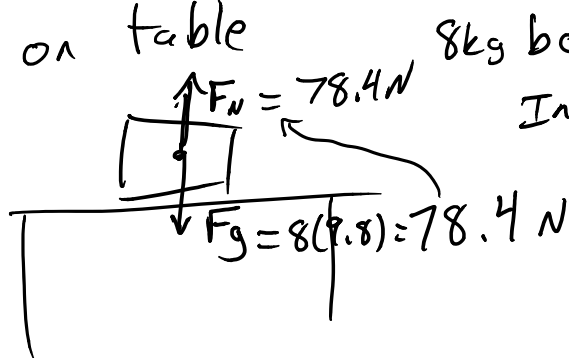
November-26-15 8:36 AM

Normal Force is a reaction force.

It is the force from a surface that pushes perpendicularly to stop an object from travelling through the surface.

It will always be the exact value to balance the forces pushing the surface.

① Box on table

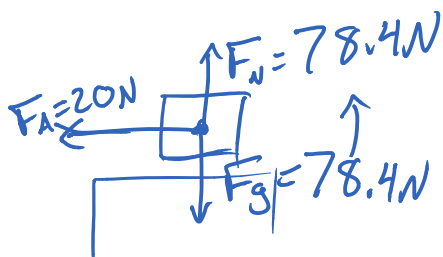


8kg box.

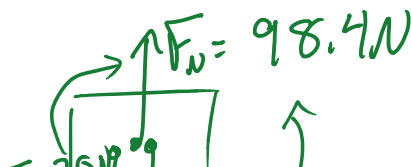
In this case

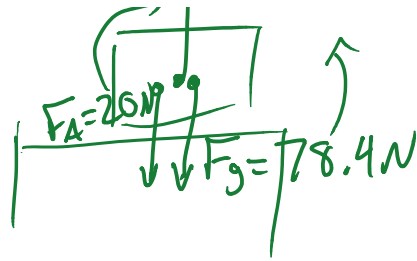
$$F_N = F_g$$

② Box on table \rightarrow pushing 20N left
8kg box Frictionless

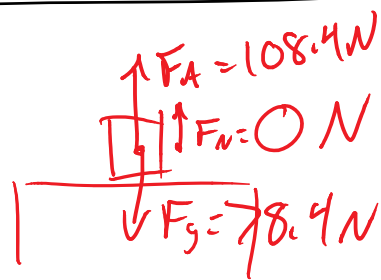
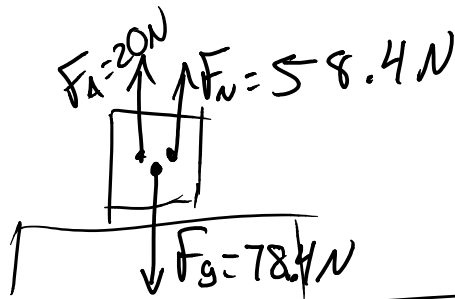


③ Box on table \rightarrow pushing 20N down
8kg box





④ Box on table \rightarrow pushing 20 N up
8 kg



IF it leaves the surface,
there is no more
normal force.

Wall

